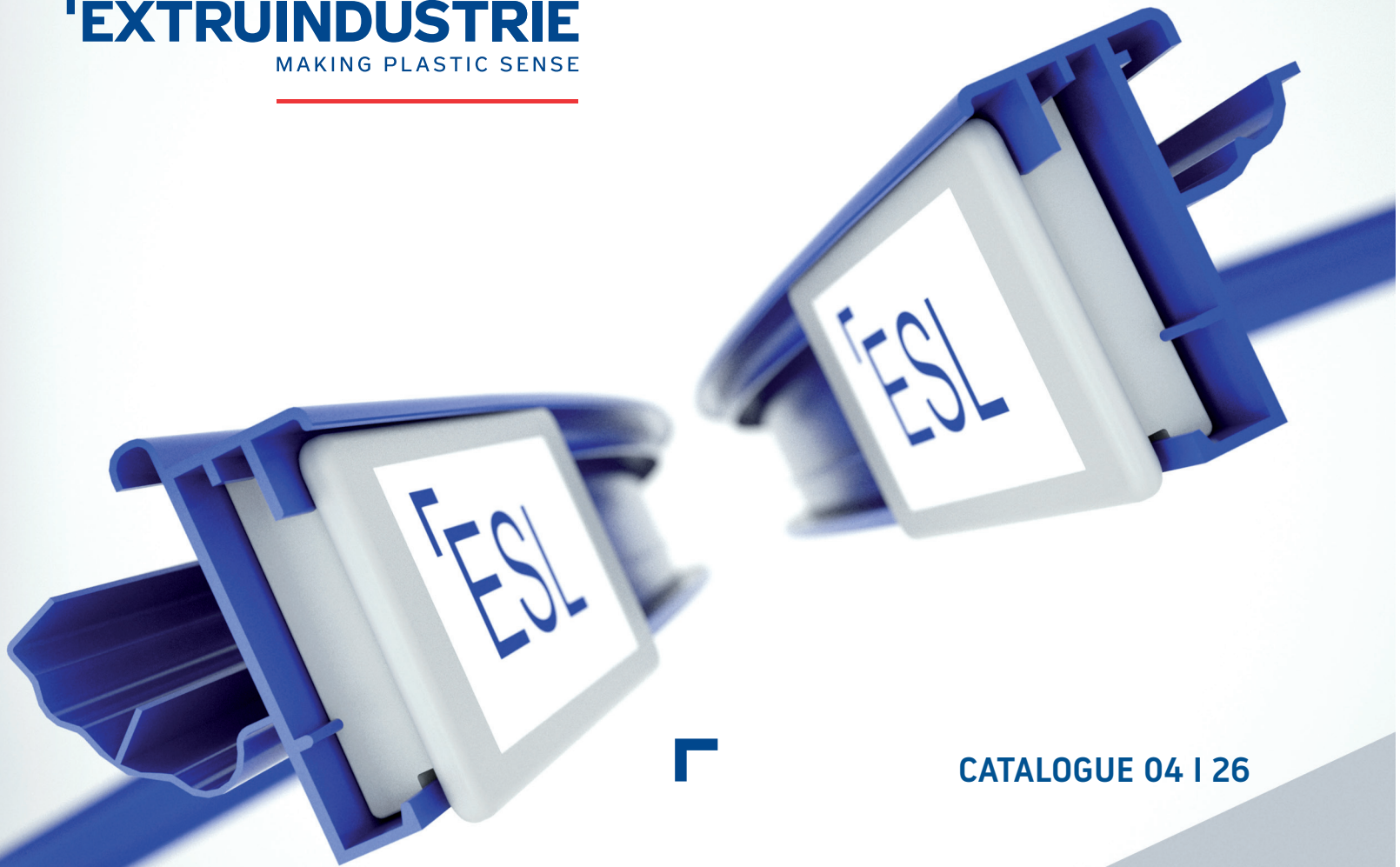


---

**EXTRUINDUSTRIE**  
MAKING PLASTIC SENSE

---



CATALOGUE 04 | 26

# SES IMAGOTAG VUSION PROFILES

ONE STOP SHOP

OWN TOOL  
CONSTRUCTION

ISO 9001:2015

CUSTOMIZED  
SERVICES

# CONTENT



CATALOGUE 04 | 26

---

**SES IMAGOTAG VUSION** 3—8

---

**ACCESSORIES** 9

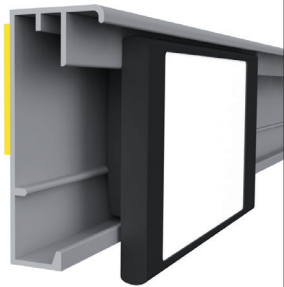


**ISO 9001**  
REGISTERED QUALITY SYSTEM

# SES IMAGOTAG VUSION

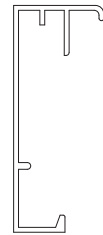
HOLDERS FOR ELECTRONIC SHELF LABELS

HOLDERS

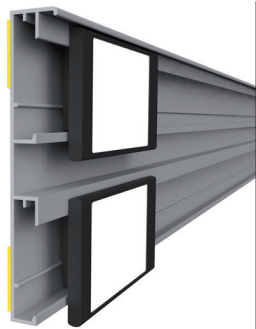


## ESL SES

ESL flat profile with adhesive tape

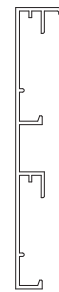


profile name	art.no
<b>ESL SES</b>	<b>EI488</b>



## ESL double SES

ESL double flat profile with adhesive tape

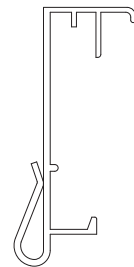


profile name	art.no
<b>ESL double SES</b>	<b>EI472</b>

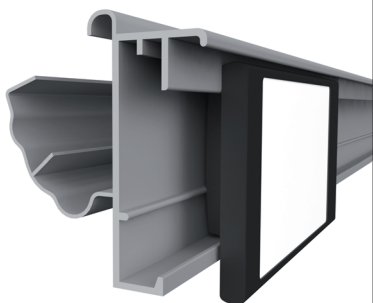


## ESL CLIP SES

Universal clip to use with existing data strips for paper labels

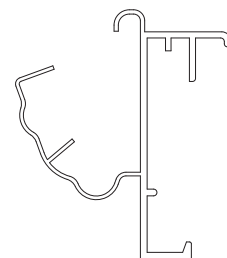


profile name	art.no
<b>ESL CLIP SES</b>	<b>EI505</b>



## ESL LS SES

ESL profile for LINDE, STOREBEST and TEGOMETALL shelves

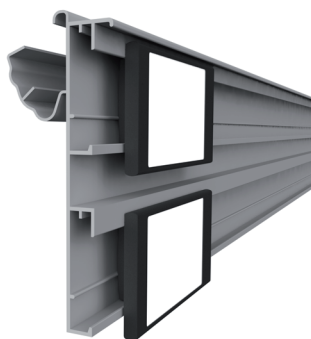


profile name	art.no
<b>ESL LS SES</b>	<b>EI486</b>

# SES IMAGOTAG VUSION

HOLDERS FOR ELECTRONIC SHELF LABELS

HOLDERS



## ESL LS double SES

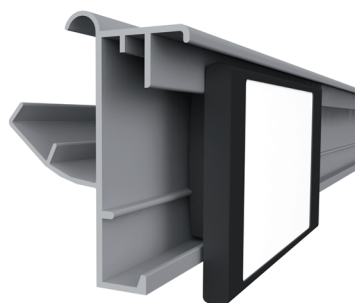
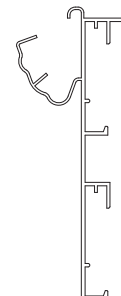
ESL double profile for LINDE, STOREBEST and TEGOMETALL shelves

profile name

art.no

**ESL LS double SES**

**EI469**



## ESL MOEX SES

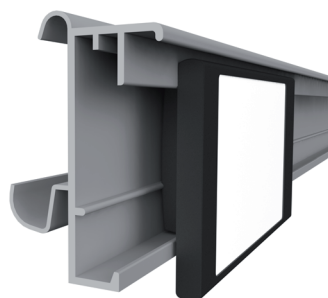
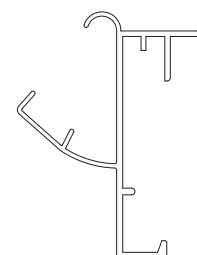
ESL profile for MODERN EXPO shelves

profile name

art.no

**ESL MOEX SES**

**EI507**



## ESL HAUSER SES

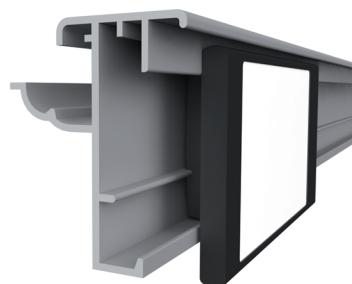
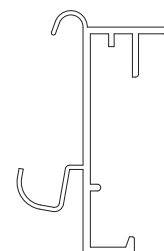
ESL profile for HAUSER and TEGOMETALL shelves

profile name

art.no

**ESL HAUSER SES**

**EI473**



## ESL FRW SES

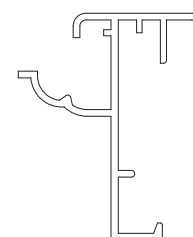
ESL profile for WANZL (Wire-Tech) shelves

profile name

art.no

**ESL FRW SES**

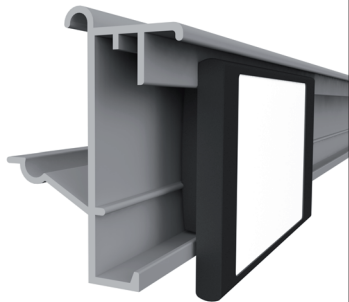
**EI491**



# SES IMAGOTAG VUSION

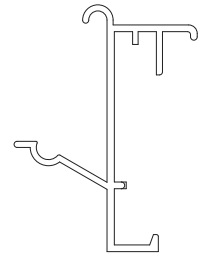
HOLDERS FOR ELECTRONIC SHELF LABELS

HOLDERS

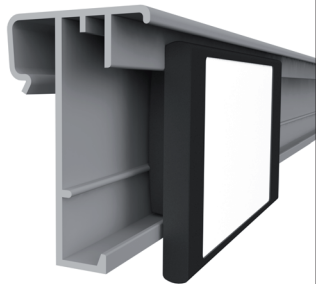


## ESL LK-C SES

ESL profile for LINDE refrigerator shelves, used with Linde Clips for LK-C

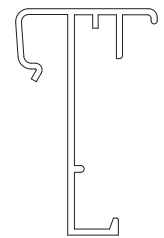


profile name	art.no
<b>ESL LK-C SES</b>	<b>EI465</b>

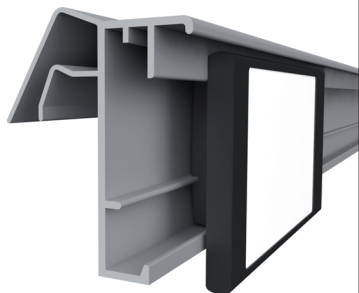


## ESL KET SES

ESL profile for wire shelves

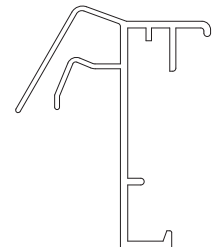


profile name	art.no
<b>ESL KET SES</b>	<b>EI489</b>



## ESL KE SES

ESL profile for wire shelves

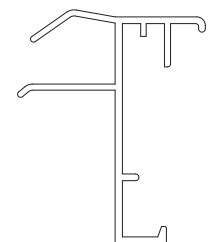


profile name	art.no
<b>ESL KE SES</b>	<b>EI470</b>



## ESL KOL SES

ESL profile for wire shelves

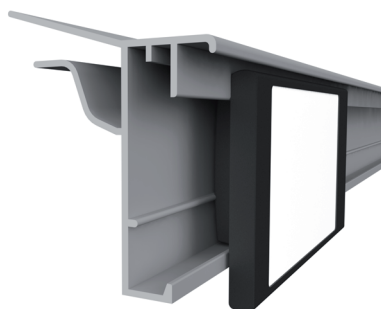


profile name	art.no
<b>ESL KOL SES</b>	<b>EI467</b>

# SES IMAGOTAG VUSION

HOLDERS FOR ELECTRONIC SHELF LABELS

HOLDERS



## ESL GLS SES

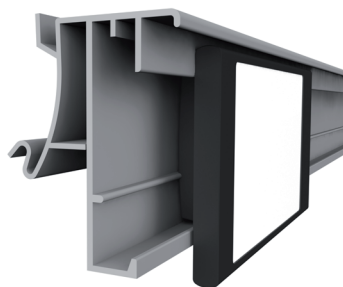
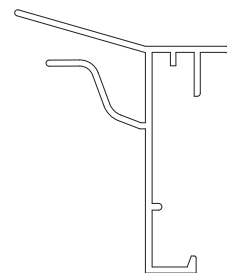
ESL profile for glass shelves

profile name

art.no

**ESL GLS SES**

**EI495**



## ESL HSA SES

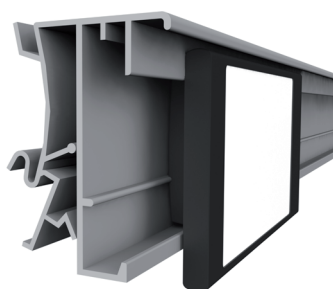
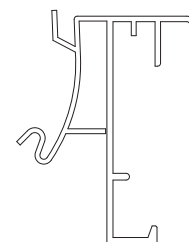
ESL profile for HERMES, LAFORTEZZA and YUDIGAR shelves with soft hinge, compatible with our angular adapter EI264 for adjustable inclination

profile name

art.no

**ESL HSA SES**

**EI501**



## ESL HSA\_2 SES

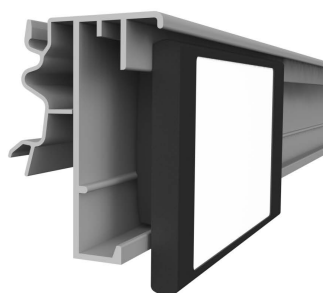
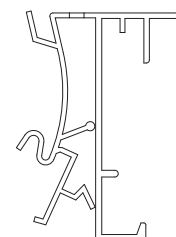
ESL profile for HERMES, LAFORTEZZA and YUDIGAR shelves with soft hinge and adjustable angle position

profile name

art.no

**ESL HSA\_2 SES**

**EI502**



## ESL HSA\_3 SES

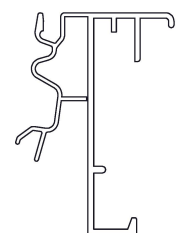
ESL profile for HERMES, LAFORTEZZA and YUDIGAR shelves with soft hinge, compatible with our angular adapter EI264 for adjustable inclination

profile name

art.no

**ESL HSA\_3 SES**

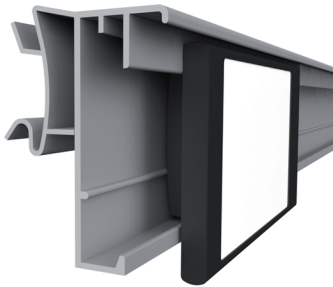
**EI526**



# SES IMAGOTAG VUSION

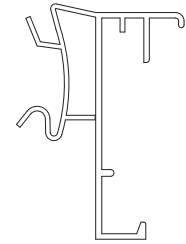
HOLDERS FOR ELECTRONIC SHELF LABELS

HOLDERS

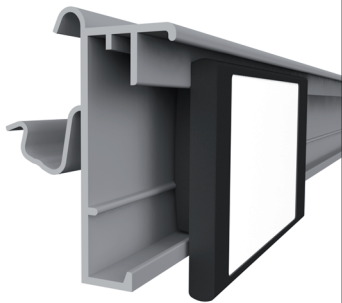


## ESL IMZ SES

ESL profile for INTRAC and ARNEG shelves with soft hinge, compatible with our angular adapter EI264 for adjustable inclination

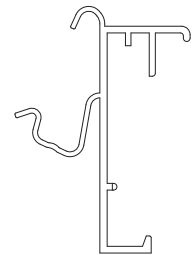


profile name	art.no
<b>ESL IMZ SES</b>	<b>EI511</b>

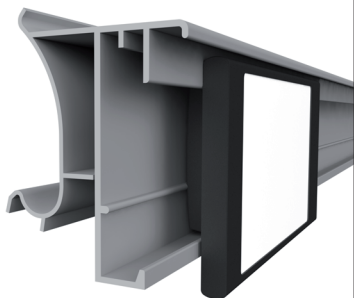


## ESL CEFLA SES

ESL profile for CEFLA shelves with soft hinge, compatible with our angular adapter EI264 for adjustable inclination

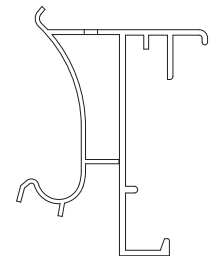


profile name	art.no
<b>ESL CEFLA SES</b>	<b>EI485</b>

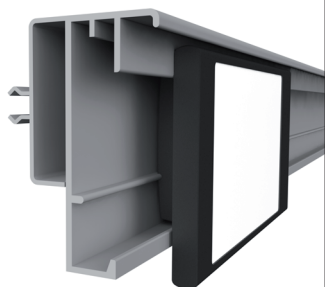


## ESL SIDAC SES

ESL profile for SIDAC shelves with soft hinge, compatible with our angular adapter EI264 for adjustable inclination

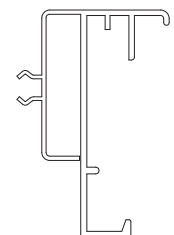


profile name	art.no
<b>ESL SIDAC SES</b>	<b>EI509</b>



## ESL SID\_2 SES

ESL profile for SIDAC shelves with soft hinge, compatible with our angular adapter EI264 for adjustable inclination

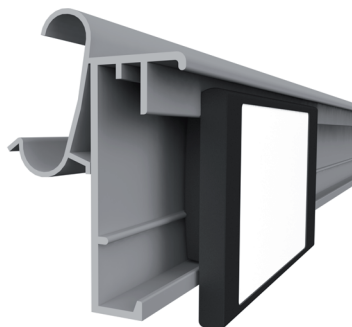


profile name	art.no
<b>ESL SID_2 SES</b>	<b>EI510</b>

# SES IMAGOTAG VUSION

HOLDERS FOR ELECTRONIC SHELF LABELS

HOLDERS



## ESL EPTA SES

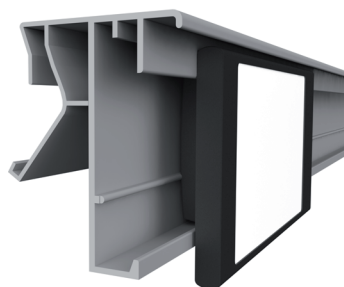
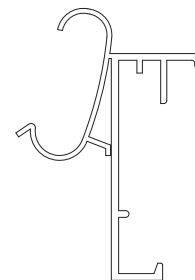
ESL profile for EPTA and COSTAN shelves

profile name

**ESL EPTA SES**

art.no

**EI471**



## ESL MGW-GL SES

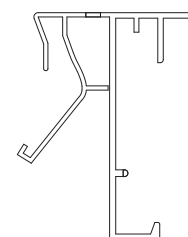
ESL profile for HANSA MERTENS, ITAB and GONDELLA shelves with soft hinge, compatible with our angular adapter EI264 for adjustable inclination

profile name

**ESL MGW-GL SES**

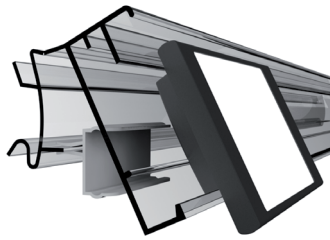
art.no

**EI515**



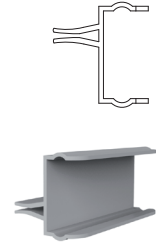
# ACCESSORIES

ACCESSORIES

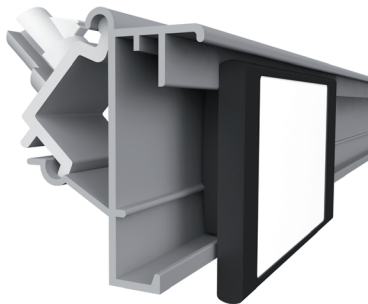


## Angular adapter

The Angular adapter EI264 is designed to be used in two different positions. It can only be used on the rails specified within this catalogue

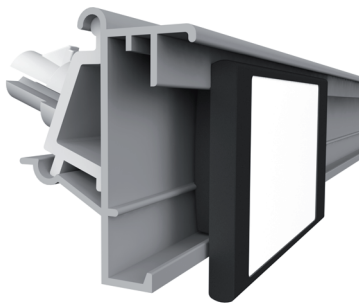
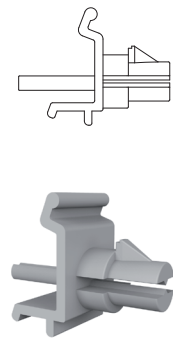


profile name	art.no
<b>Angular adapter</b>	<b>EI264</b>



## Linde Clips for LK-C

Clip for installation of ESL LK-C SES profile



profile name	art.no
<b>Linde Clips for LK-C</b>	<b>Z-10000405</b>



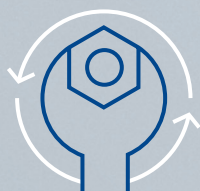


# 40 YEARS OF EXPERIENCE



## INDEPENDENCE

our equipment and processes are fully self-contained within our production facilities



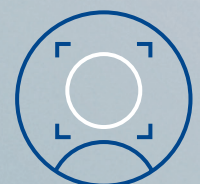
## FULL TURN-KEY SERVICE

from the initial consultation, design to the finished product



## QUALITY

our products meet the international ISO 9001:2015 standard



## CUSTOMER ORIENTED

management & technical team

Extruindustrie CR s.r.o.

Průmyslová 505  
Ždírec nad Doubravou  
582 63  
Czech Republic



T: +420 569 695 002  
E: [INFO@EXTRUINDUSTRIE.CZ](mailto:INFO@EXTRUINDUSTRIE.CZ)  
W: [EXTRUINDUSTRIE.CZ](http://EXTRUINDUSTRIE.CZ)