

---

**EXTRUINDUSTRIE**  
MAKING PLASTIC SENSE

---



CATALOGUE 03 | 26

# SOLUM PROFILES

ONE STOP SHOP

OWN TOOL  
CONSTRUCTION

ISO 9001:2015

CUSTOMIZED  
SERVICES

# CONTENT



CATALOGUE 03 | 26

---

**SOLUM** 3—8

---

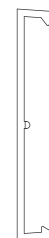
**ACCESSORIES** 9



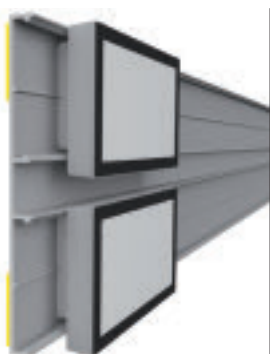


## ESL SOLUM Newton

ESL flat profile with adhesive tape



profile name	art.no
<b>ESL SOLUM Newton</b>	<b>EI400</b>

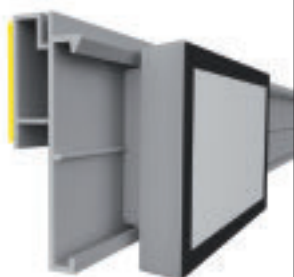


## ESL double SOLUM Newton

ESL double flat profile with adhesive tape

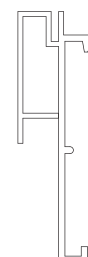


profile name	art.no
<b>ESL double SOLUM Newton</b>	<b>EI427</b>



## ESL G SOLUM Newton

ESL profile with adhesive tape and soft hinge, compatible with our angular adapter EI264 for adjustable inclination

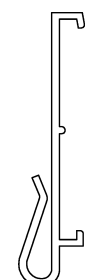


profile name	art.no
<b>ESL G SOLUM Newton</b>	<b>FF004</b>



## ESL CLIP SOLUM

Universal Clip to use with existing data strips for paper labels



profile name	art.no
<b>ESL CLIP SOLUM</b>	<b>EI542</b>

# SOLUM

HOLDERS FOR ELECTRONIC SHELF LABELS

HOLDERS



## ESL LS SOLUM Newton

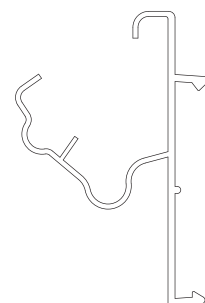
ESL profile for LINDE, STOREBEST  
and TEGOMETALL shelves

profile name

art.no

**ESL LS SOLUM Newton**

**EI401**



## ESL LS double SOLUM Newton

ESL double profile for LINDE, STOREBEST  
and TEGOMETALL shelves

profile name

art.no

**ESL LS double SOLUM Newton**

**EI405**



## ESL MOEX SOLUM Newton

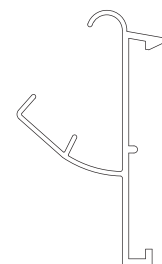
ESL profile for MODERN EXPO shelves

profile name

art.no

**ESL MOEX SOLUM Newton**

**FF013**



## ESL HAUSER SOLUM Newton

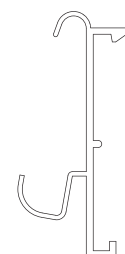
ESL profile for HAUSER and TEGOMETALL shelves

profile name

art.no

**ESL HAUSER SOLUM Newton**

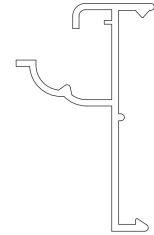
**EI534**





## ESL FRW SOLUM Newton

ESL profile for WANZL (Wire-Tech) shelves

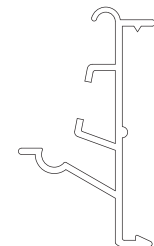


profile name	art.no
<b>ESL FRW SOLUM Newton</b>	<b>EI403</b>



## ESL LK-C SOLUM Newton

ESL profile for LINDE refrigerator shelves,  
used with Linde Clips for LK-C

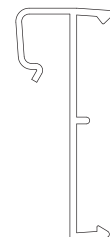


profile name	art.no
<b>ESL LK-C SOLUM Newton</b>	<b>EI402</b>



## ESL KET SOLUM Newton

ESL profile for wire shelves

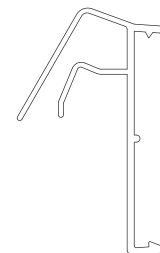


profile name	art.no
<b>ESL KET SOLUM Newton</b>	<b>EI490</b>



## ESL KE SOLUM Newton

ESL profile for wire shelves



profile name	art.no
<b>ESL KE SOLUM Newton</b>	<b>EI404</b>

# SOLUM

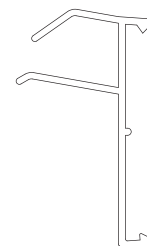
HOLDERS FOR ELECTRONIC SHELF LABELS

HOLDERS



## ESL KOL SOLUM Newton

ESL profile for wire shelves



profile name

art.no

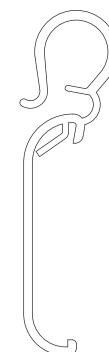
**ESL KOL SOLUM Newton**

**EI452**



## ESL DRA SOLUM Newton

ESL profile for wire hooks



profile name

art.no

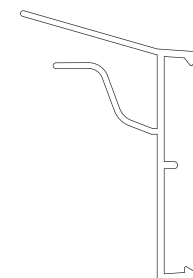
**ESL DRA SOLUM Newton**

**EI538**



## ESL GLS SOLUM Newton

ESL profile for glass shelves



profile name

art.no

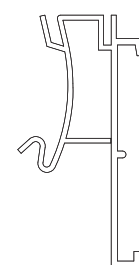
**ESL GLS SOLUM Newton**

**EI484**



## ESL HSA SOLUM Newton

ESL profile for HERMES, LAFORTEZZA and YUDIGAR shelves with soft hinge, compatible with our angular adapter EI264 for adjustable inclination



profile name

art.no

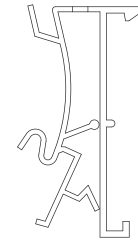
**ESL HSA SOLUM Newton**

**FF005**



## ESL HSA\_2 SOLUM Newton

ESL profile for HERMES, LAFORTEZZA and YUDIGAR shelves with soft hinge and adjustable angle position

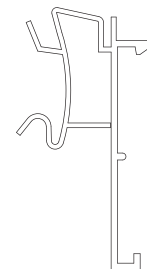


profile name	art.no
<b>ESL HSA_2 SOLUM Newton</b>	<b>FF022</b>



## ESL IMZ SOLUM Newton

ESL profile for INTRAC and ARNEG shelves with soft hinge, compatible with our angular adapter EI264 for adjustable inclination

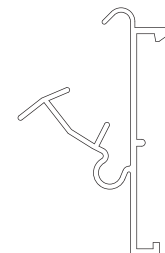


profile name	art.no
<b>ESL IMZ SOLUM Newton</b>	<b>FF020</b>



## ESL CEFLA\_2 SOLUM Newton

ESL profile for CEFLA shelves

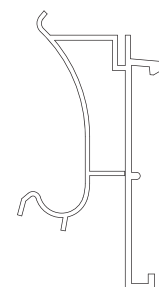


profile name	art.no
<b>ESL CEFLA_2 SOLUM Newton</b>	<b>FF019</b>



## ESL SIDAC SOLUM Newton

ESL profile for SIDAC shelves with soft hinge, compatible with our angular adapter EI264 for adjustable inclination

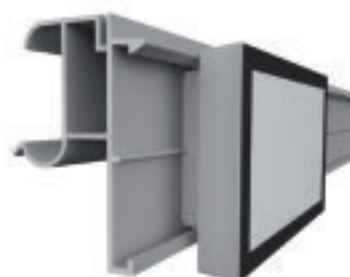


profile name	art.no
<b>ESL SIDAC SOLUM Newton</b>	<b>FF012</b>

# SOLUM

HOLDERS FOR ELECTRONIC SHELF LABELS

HOLDERS



## ESL EPTA SOLUM Newton

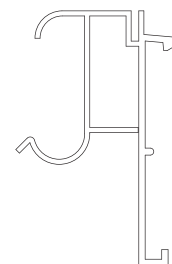
ESL profile for EPTA and COSTAN shelves with soft hinge, compatible with our angular adapter EI264 for adjustable inclination

profile name

art.no

**ESL EPTA SOLUM Newton**

**FF011**



## ESL MGW-GL SOLUM Newton

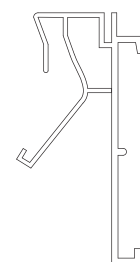
ESL profile for HANSA MERTENS, ITAB and GONDELLA shelves with soft hinge, compatible with our angular adapter EI264 for adjustable inclination

profile name

art.no

**ESL MGW-GL SOLUM Newton**

**FF006**



## ESL IMP SOLUM

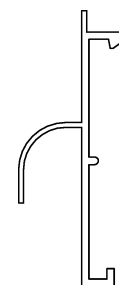
ESL profile for METALSISTEM shelves

profile name

art.no

**ESL IMP SOLUM**

**FF023**



## ESL ARC SOLUM

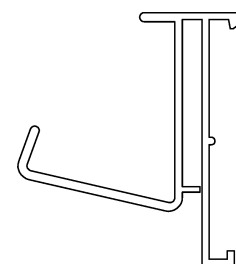
ESL profile for ARCON shelves with soft hinge, compatible with our angular adapter EI264 for adjustable inclination

profile name

art.no

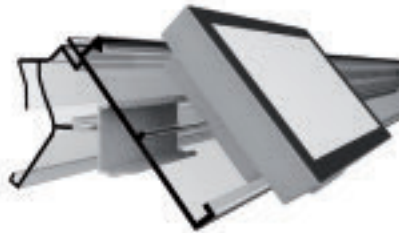
**ESL ARC SOLUM**

**FF024**



# ACCESSORIES

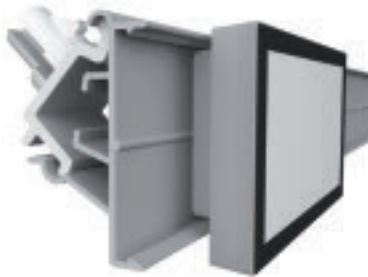
ACCESSORIES



## Angular adapter

The Angular adapter EI264 is designed to be used in two different positions. It can only be used on the rails specified within this catalogue

profile name	art.no
<b>Angular adapter</b>	<b>EI264</b>



## Linde Clips for LK-C

Clip for installation of ESL LK-C SOLUM Newton profile

profile name	art.no
<b>Linde Clips for LK-C</b>	<b>Z-10000405</b>







# 40 YEARS OF EXPERIENCE



## INDEPENDENCE

our equipment and processes are fully self-contained within our production facilities



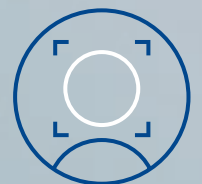
## FULL TURN-KEY SERVICE

from the initial consultation, design to the finished product



## QUALITY

our products meet the international ISO 9001:2015 standard



## CUSTOMER ORIENTED

management & technical team

Extruindustrie CR s.r.o.

Průmyslová 505  
Ždírec nad Doubravou  
582 63  
Czech Republic



T: +420 569 695 002  
E: [INFO@EXTRUINDUSTRIE.CZ](mailto:INFO@EXTRUINDUSTRIE.CZ)  
W: [EXTRUINDUSTRIE.CZ](http://EXTRUINDUSTRIE.CZ)